

## KCBS Judging Procedures

ABA will be using KCBS Judging procedures. See [www.kcbs.us](http://www.kcbs.us) for judging procedures

### Instructions for Submitting Samples for Judging

#### JUDGING PROCEDURES:

KCBS sanctioning allows for blind judging only. Entries will be submitted in an approved KCBS numbered container provided by the contest organizer. The container may be re-numbered by the KCBS Contest Rep or authorized personnel before being presented to the judges.

- 1) Judges may not fraternize with teams on turn-in day until conclusion of judging.
- 2) Judging will be done by a team of 6 persons, who are at least 21 years of age. Only Judges, Contest Reps and necessary support staff are allowed in judging area during the judging process. No other activities are permitted in the judging area, during judging process.
- 3) Each judge will first score all the samples for appearance of the meat. The turn-in containers will then be passed around the table and each judge will place a sample from each of the containers in the appropriate box on the judging mat. The judge will then score each entry for taste and tenderness, before moving on to the next entry.
- 4) The scoring system is from 9 to 2, all whole numbers between two and nine may be used to score an entry. 9 excellent, 8 very good, 7 above average, 6 average, 5 below average, 4 poor, 3 bad, and 2 inedible.
- 5) A score of one (1) is a disqualification and requires approval by a Contest Rep. Grounds for disqualification: All judges will give a one (1) in Appearance for unapproved garnish, pooled sauce or less than 6 samples of meat. All judges will give a one (1) in all criteria for sculptured meat, a marked turn-in container, foreign object in the container, incorrect meat. All judges not receiving a sample will give a one (1) in all criteria.
- 6) The weighting factors for the point system are as follows: Appearance - 0.5714, Taste - 2.2858, Tenderness - 1.1428.
- 7) The low score will be thrown out. Results will be tallied. If there is a tie in one of the categories, it will be broken by the computer, as follows: The scores will be compared (counting all five judges) for the highest cumulative scores in taste, then tenderness, then appearance. If still tied, then the low score, which was thrown out, will be compared and the higher of the low scores will break the tie. If still tied, then a computer generated coin toss will be used.
- 8) Total points per entry will determine the champion within each meat category.
- 9) Cumulative points for only the four (4) KCBS categories will determine the Grand Champion and Reserve Grand Champion except the Dodge City, KS and BarbeQlossal contests, or at the election of these organizers.

#### Hold Harmless Clause

The American Bass Anglers, event sponsors, Early Times Whisky® and Brown & Forman shall not be responsible or liable in any way for any losses, costs, damages, liabilities, debts or expenses incurred by the participants of the American Bass Anglers Barbeque Cook-off, its parents, subsidiaries, affiliates, successors or assigns as a result of any acts, omissions or negligence of any person, firm, partnership or corporation attending or participating in the 2009 American Bass Anglers Barbeque Cook-off, whether or not the act, omissions or negligence occurs prior to, during, or following the 2009 American Bass Anglers Barbeque Cook-off.

#### No Competing Brand Signage

Contestants agree to not wear logos, display advertisements or advertise with signage or any other method any competing brands that are sponsors of this event. Each Team Captain must be over 21 years of age and will be required to read and complete a Liability Release Agreement at the event.

#### The Contest

Setup for American Bass Anglers Barbeque Cook-off events will begin on Friday beginning at 8am and the Cook-off will be held on Saturday. The American Bass Anglers Barbeque Cook-off is sponsored by Early Times Whisky® and operated by American Bass Anglers, Inc. These competitions are open to everyone, professionals and amateurs. There is no limit to the number of cooks on a team. The total number of teams will be determined by space available at each location and will be on a first come first serve basis.

"Early Times is a registered trademark used with permission. All rights reserved."

## Schedule of Events

### Entry Fee:

**Pro Teams: \$250.00**  
**Backyard Teams: \$50.00**

### Friday:

**Site Set-up: 8am**

**Registration: 8am - 3pm**

**Meat Inspection:** At check-in, meat will be inspected. No pre-cooking is allowed.

**KCBS Chef's Meeting: 5:00pm**

All registered contestants must attend, for review of rules and regulations for the event.

### Saturday:

**Pro Judging: 11:00am - 2:00pm**

The tour judging rules will be mailed to each competitor as entries are received.

**Awards: 4:00pm**

The Award Ceremonies will be held just after the Bass Tournament Weigh in.

**The Grand Champion Pro Team from each event will receive their entry for their choice of KCBS Cook-off (\$250 value)**

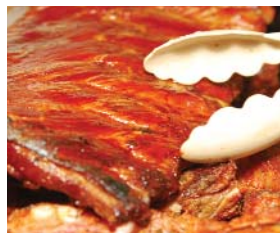
**American Bass Anglers, Inc.**  
**PO Box 475**  
**Athens, AL 35612**

KCBS Rules and information are available at  
[www.kcbs.us](http://www.kcbs.us)

For more information about the American Bass Anglers Barbecue Cook-offs visit:

**WWW.ABABBQ.COM**  
**Or call toll free 888-203-6222**

**KCBS Sanctioning Events**



2009

SPONSORED BY

**EARLYTIMES**  
DISTILLERY NO. 354  
Kentucky Whisky

**Open Barbeque Cook-Off Challenge to both Professionals and Backyard Teams**

### **2009 Cook-Off Events**

July 18 Kentucky Lake, Paris, TN

Aug 22 Lake Barkley, Kuttawa, KY

Sept 19 Lake Guntersville, Guntersville, AL

Sept 26 Pickwick Lake, Florence, AL

Nov 7 Dardanelle, Russellville, AR

**For more information call 888-203-6222**  
**or WWW.ABABBQ.COM**

## This Cook-Off is for both Professional and Backyard Barbeque Teams

### Additional

### 1 - BBQ Sauce using Early Times Whisky.

The Grand Champion Pro team will receive a paid entry for Winners Choice KCBS Cook-off (\$250) value

These events are operated by American Bass Anglers, Inc.

July 18, 2009  
Paris, TN on Kentucky Lake  
Paris Landing State Park, Paris, TN

August 22, 2009 Kuttawa, KY  
Lake Barkley \*\*Grand Champion \$1,000\*\*  
Kuttawa City Park

September 19, 2009  
Guntersville, AL on Lake Guntersville  
Bucky Howe Park (Highway 431)

September 26, 2009  
Florence, AL on Pickwick Lake  
McFarland Park

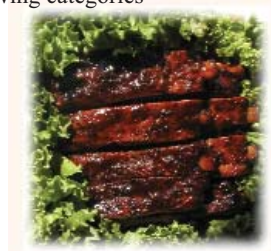
November 7, 2009  
Russellville, AR on Lake Dardanelle  
Lake Dardanelle State Park

Backyard Team Entry Fee is only \$50  
Create your own Team and prove to the world your BBQ Talents!  
ABA is looking for the Best BBQ Teams.

### PRO BARBEQUE COOK-OFF CATEGORIES

Teams may enter in any of the following categories

1. Pork Ribs
2. Pork (Shoulder/Butt)
3. Chicken
4. Brisket
5. Special Sauce (Use of Early Times Whisky®)
6. Dessert



### Awards:

#### Payout Per Category: Pro Teams

1st Place: \$400 - 2nd Place: \$200 - 3rd Place: \$150  
4th Place: \$125 - 5th Place: \$100  
Sauce Award: \$100 - Dessert Award: \$100

Grand Champion: \$500 + an entry fee into the Winners Choice KCBS BBQ Cook-Off event (\$250 value)  
Reserve Grand Champion Prize: \$250

#### Backyard Cook-off Payout

Per Category Payout : Backyard Teams  
2 Backyard Categories: Chicken and Ribs

1st Place: \$200 - 2nd Place: \$100 - 3rd Place: \$75  
4th Place: \$60 - 5th Place: \$50  
Grand Champion Prize: \$100 + Plaque

*Grand Champion Pro Team at the Kuttawa Kentucky Cook-Off will also receive \$1,000\*\* sponsored by the Lake Barkley Tourist Commission*

Professional Cook-off will be held with 15 Professional or more Teams. All professional team entries must be received within 10 days prior to the event or a late fee will be assessed of \$25. In the event a cook-off is cancelled all teams will be notified 7 day prior to the event and entry fees will be refunded in full. Professional payout will increase based on more than 15 teams. These are a 100% payout events. Backyard Cook-off will be held regardless of the number of entries.

### Team Entry Form

(please print all following information)

Team Captain \_\_\_\_\_

Team Captain Date of Birth: \_\_\_/\_\_\_/\_\_\_\_\_ (must be over 21)

Team Name \_\_\_\_\_

Address \_\_\_\_\_

City \_\_\_\_\_ State \_\_\_\_\_ Zip \_\_\_\_\_

Daytime Phone \_\_\_\_\_

Cell Phone \_\_\_\_\_

Email \_\_\_\_\_

Team Website: \_\_\_\_\_

All Team Captains must be over the age of 21 and a member of American Bass Anglers, Inc. \$15 for each team membership. Teams will receive the American Bass Anglers magazine which will contain coverage from each event.

#### Select the events your team will register for:

- July 18, 2009 Paris, TN - Paris Landing State Park
- Aug 22, 2009 Kuttawa, KY - Kuttawa City Park
- Sept 19, 2009, Guntersville, AL - Bucky Howe Park
- Sept 26, 2009, Florence, AL - McFarland Park
- Nov 7, 2009, Russellville, AR - Dardanelle State Park

#### Entry Fees:

- \$250 - Pro Teams covers all meat categories
- \$50 - Backyard Teams covers Chicken and Ribs
- \$15.00 ABA membership / 1 Free T Shirt (size) \_\_\_\_\_
- \$10 Sauce  \$10 Special Sauce  \$10 Dessert

RV Spots at each location will be on a first come first serve basis where available. Power will be provided where available. Generators can be used.

\_\_\_\_\_ Total Cook-off Entry \_\_\_\_\_ Total ABA Membership

Entry Fees allow the Contestants to enter in any or all meat categories:

- \$10 entry for each of the following special categories
- Special Sauce (using Early Times Whisky®)  Dessert

Make all checks to: American Bass Anglers, Inc., Mail entries to: PO Box 475, Athens, AL 35612, Register by phone toll free at (888) 203-6222

I agree to read fully the rules and agree to abide by them.  
Captain's Signature: \_\_\_\_\_

Date: \_\_\_\_\_  
(Team Captains will be required to sign a liability release agreement on-site)

Entries are on first come first serve basis. For more information visit [www.ababbq.com](http://www.ababbq.com) or contact Debra Talley at (256) 777-6045 or (888) 203-6222.